

**BOOKING NO : 88203 89040**



**DEVELOPED BY  
KRK SAMAIRA GROUP OF COMPANIES  
(SAMAIRA CONSTRUCTION)**

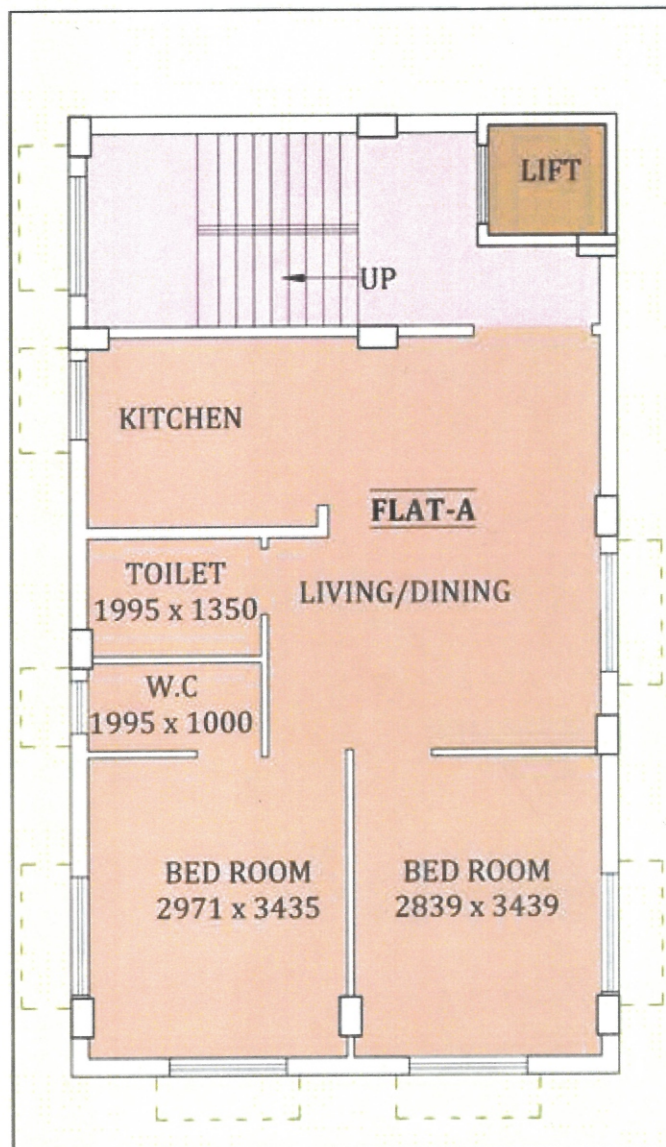
**SITE : 15A, Ahiripukur 2nd Lane, P.S- Karaya , Ward No -69, Kolkata -700 019**

**FOR BOOKING OR ENQUIRY PLEASE CONTACT**

**91 88203 89040**



# G+IV STORIED RESIDENTIAL BUILDING TYPICAL FLOOR PLAN



**40 FT. WIDE ROAD STREET**

FLAT AREA					
FLAT MKD.	FLAT TYPE	BUILT-UP AREA	SHARE OF SERVICE AREA	BUILT-UP WITH SHARE OF SERVICE AREA	SUPER BUILT-UP AREA (20%)
FLAT-A	2BHK	578 SQ.FT.	162 SQ.FT.	740 SQ.FT.	888 SQ.FT.

<b>Items</b>	<b>Specifications</b>
<b>Structure</b>	<b>RCC Frame</b>
<b>Walls</b>	<b>Impeccable Brick Work, out side 8", inside 3", inbetween flats 5"</b>
<b>Living &amp; Dining Room</b>	<b>Vitrified tiles</b>
<b>Bed Rooms</b>	<b>Vitrified tiles</b>
<b>Toilet</b>	<b>Anti-skid ceramic tiles</b>
	<b>Glazed tiles up to 7ft on the walls</b>
	<b>standard CP fittings Provision for hot &amp; cold water Line</b>
	<b>PVC door of good finish</b>
<b>Kitchen</b>	<b>ceramic tiles. Glazed tiles up to 2ft above the counter</b>
	<b>Stainless steel sink, Counter top with granite</b>
<b>Common Lobby</b>	<b>Tiles</b>
<b>Doors</b>	<b>Flush Door</b>
<b>Windows</b>	<b>Still Window</b>
<b>Internal Finish</b>	<b>Putti finish</b>
<b>External Finish</b>	<b>Weather Coat</b>
<b>Electrical</b>	<b>Concealed Copper wiring( F. R.)wire. Switches of ISI marked</b>
<b>Lift</b>	<b>Standard</b>





**PROPOSED G+IV STORIED RESIDENTIAL BUILDING AT  
PREMISES NO. 16C, USTAD BADE GOLAM ALI KHAN  
SARANI, WARD NO. - 65, BOROUGH NO. - VII.  
P.O. - KARAYA, P.S. - BALLYGUNGE KOLKATA - 700019**

**FOR BOOKING OR ENQUIRY PLEASE CONTACT**

**+91 88203 89040**